



NOTTINGHAM MAJOR

RULESPACK



BASIC INFORMATION

**A 40K SINGLES EVENT FOUGHT OVER 2 DAYS & 5 ROUNDS.
THE LATEST GAMES WORKSHOP GT PACK MISSIONS WILL BE IN USE.**

28TH JUNE - 29TH JUNE 2025

**NOTTINGHAM WILDCATS ARENA
GREENWOOD ROAD
NOTTINGHAM
NG3 7ED**

YOU CAN FIND MORE INFORMATION ABOUT OUR EVENTS ON OUR EVENTS PAGE

[HTTPS://WWW.GLASSHAMMERGAMING.CO.UK/GHGEVENTS](https://www.glasshammergeaming.co.uk/ghgevents)

ENTRY TO THE EVENT IS £60 AND INCLUDES:

- 5 X 3 HOUR GAMES OF 40K FUN
- OVER **£1000** OF PRIZES UP FOR GRABS
- OUR AWESOME TABLES AND TERRAIN TO PLAY YOUR GAMES
- FREE PARKING

REGISTERING FOR THE EVENT

ONCE YOU'VE PURCHASED A TICKET YOU'LL NEED TO REGISTER FOR THE TOURNAMENT USING THE LINK BELOW:

[HTTPS://WWW.GLASSHAMMERGAMING.CO.UK/EVENT-REGISTRATION](https://www.glasshammergeaming.co.uk/event-registration)

ONCE COMPLETED, PROVIDED ALL YOUR INFORMATION IS CORRECT, YOU'LL BE ADDED TO BCP WITHIN 3 DAYS OF SUBMISSION.

PLAYERS NEED TO BRING:

- THEIR 2000PT, BATTLE FORGED ARMY (ALL WYSIWYG)
- DICE, COUNTERS OR MARKERS YOU MAY NEED
- A PEN, CALCULATOR AND GLUE FOR REPAIRS
- AN ARMY TRAY
- A COPY OF ALL RULES AND DATASHEETS THEY REQUIRE FOR THEIR ARMY

REFUNDS ARE AVAILABLE UP TO 30 DAYS AFTER PURCHASE

EVENT TIMINGS

DAY 1

REGISTRATION	/ 8:30 - 9:00
GAME 1	/ 9:00 - 12:00
LUNCH	/ 12:00 - 13:00
GAME 2	/ 13:00 - 16:00
BREAK	/ 16:00 - 16:30
GAME 3	/ 16:30 - 19:30

ALL PLAYERS MUST HAVE LEFT THE HALL BEFORE 20:00

DAY 2

GAME 4	/ 09:00 - 12:00
LUNCH	/ 12:00 - 13:00
GAME 5	/ 13:00 - 16:00
AWARDS	/ 16:15
GAME 6	/ 16:30 - 19:30

(TOP 4 ONLY)

THE FIRST ROUND DRAW WILL BE RANDOMLY GENERATED WITH FOLLOWING ROUNDS BEING DETERMINED BY A RANDOM DRAW WITHIN A WIN BRACKET.

WE WILL BE USING THE WTC FAQ WHICH CAN BE FOUND HERE:

[HTTPS://WORLDTEAMCHAMPIONSHIP.COM/WTC-RULES/](https://worldteamchampionship.com/wtc-rules/)

FOLLOW THE 'MUSTER YOUR ARMY' STEPS FROM THE WARHAMMER 40,000 CORE RULES USING RULES FOR STRIKE FORCE MISSIONS TO CREATE YOUR LIST.

ALL LISTS SHOULD BE SUBMITTED USING THE FORMAT IN THE WARHAMMER APP.

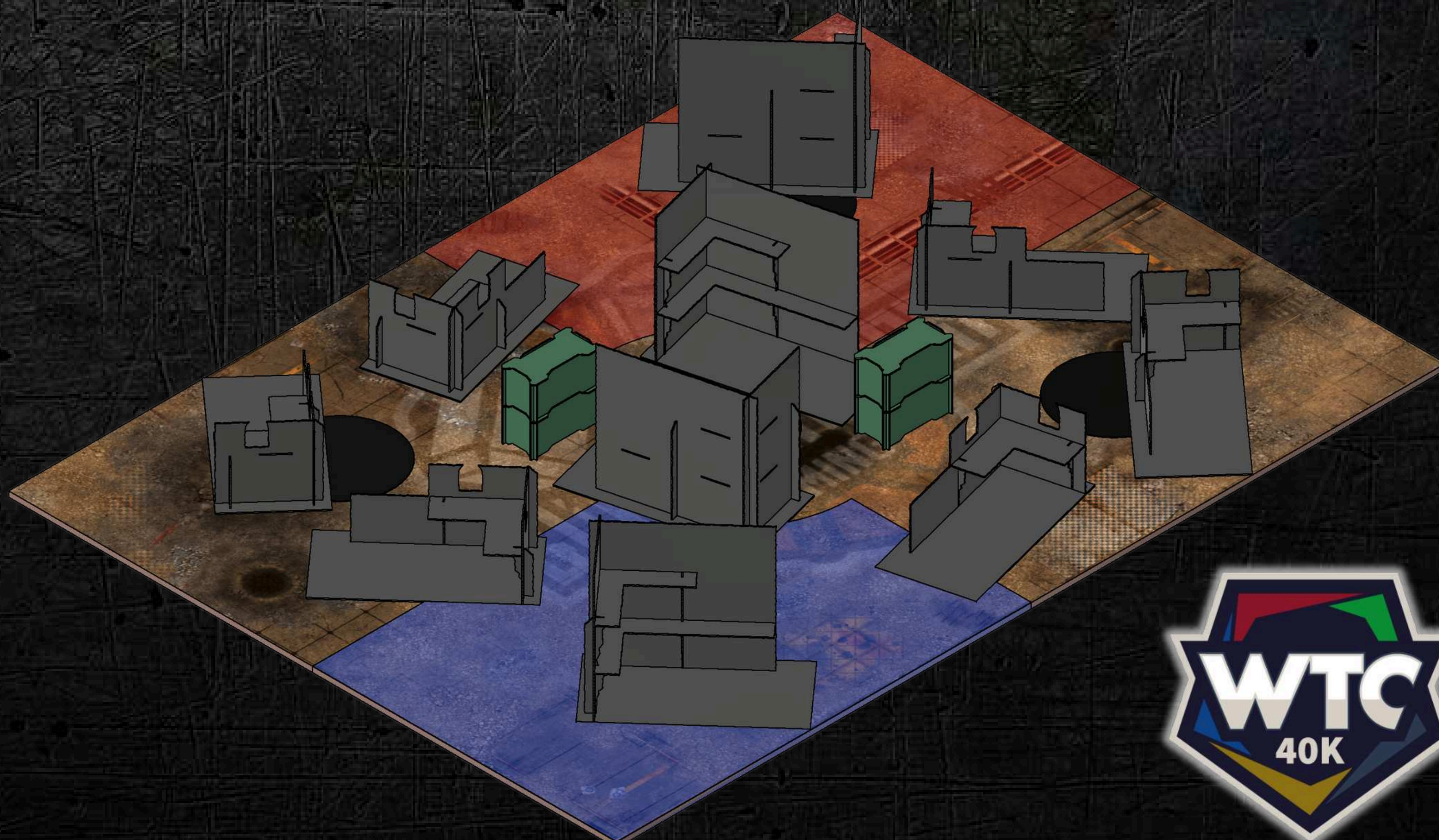
GLASSHAMMER EVENTS HAVE A REPUTATION OF BEING FUN, FRIENDLY AND WELCOMING FOR ALL WHO ATTEND AND THIS REPUTATION IS ONE WE INTEND TO UPHOLD. THEREFORE ANYONE CAUGHT CHEATING WILL BE ASKED TO LEAVE AND ANYONE BEING UNSPORTING WILL RECEIVE A YELLOW CARD.

TERRAIN LAYOUTS

ALL TABLES WILL HAVE A SET OF GLASSHAMMER WTC TERRAIN READY FOR YOU AND YOUR OPPONENT TO ARRANGE FOR YOUR GAME.

LAYOUTS CAN BE FOUND ON THE GLASSHAMMER GAMING EVENTS PAGE UNDER THE 'USEFUL LINKS' SECTION.

LINK COMING SOON...



MISSIONS

1	THE RITUAL	CRUCIBLE OF BATTLE	SWIFT ACTION
2	TAKE AND HOLD	SEARCH & DESTROY	HIDDEN SUPPLIES
3	SCORCHED EARTH	CRUCIBLE OF BATTLE	INSPIRED LEADERSHIP
4	TERRAFORM	SWEEPING ENGAGEMENT	SWIFT ACTION
5	PURGE THE FOE	TIPPING POINT	SMOKE & MIRRORS
6	TAKE AND HOLD	TIPPING POINT	RAISE BANNERS

SCORING YOUR GAME

EACH PLAYER SCORES AN AMOUNT OF POINTS BASED ON THE VP DIFFERENTIAL FROM THEIR GAME. TO DETERMINE GAME POINTS, EACH PLAYER COUNTS THEIR VICTORY POINTS, SUBTRACTS THEIR OPPONENT'S VICTORY POINTS AND CONSULTS THE TABLE BELOW. IF THE SCORE IS NEGATIVE, THE PLAYER WHO HAS A NEGATIVE DIFFERENCE COUNTS THEIR POINTS FROM THE 'OPPONENT' TABLE.

VP DIFFERENCE	PLAYER GAME POINTS	OPPONENT GAME POINTS
0	10	10
1 - 5	11	9
6 - 10	12	8
11 - 15	13	7
16 - 20	14	6
21 - 25	15	5
26 - 30	16	4
31 - 35	17	3
36 - 40	18	2
41 - 45	19	1
> 45	20	0

PRIZES

PLACINGS

**1ST - £150 GLASSHAMMER VOUCHER,
BAD-ASS WEAPON**

**2ND - £100 GLASSHAMMER VOUCHER,
BAD-ASS TROPHY**

**3RD - £50 GLASSHAMMER VOUCHER,
BAD-ASS TROPHY**

BEST IN BRACKET

TROPHY & £20 VOUCHER

PAINTING

**1ST - £150 GLASSHAMMER VOUCHER,
BAD-ASS WEAPON**

**2ND - £100 GLASSHAMMER VOUCHER,
BAD-ASS TROPHY**

**3RD - £50 GLASSHAMMER VOUCHER,
BAD-ASS TROPHY**

WOODEN SPOON

TROPHY & £20 VOUCHER

PLAYING BY INTENT

WARHAMMER 40K IS GENERALLY PLAYED USING INTENT. THIS IS CONSIDERED TO BE THE STANDARD AT GLASSHAMMER UNLESS A PLAYER DECLARES THEY WOULD PREFER TO PLAY THE GAME STRICTLY ADHERING TO EXACT MEASUREMENTS AND TIMINGS (E.G THE EXACT MOMENT A STRATAGEM IS TO BE USED). IF A PLAYER DOES NOT CONFIRM THIS IS HOW THEY WOULD LIKE TO PLAY ALL JUDGE RULINGS WILL BE MADE WITH INTENT IN MIND.

YELLOW CARDS

WHEN A PLAYER IS GIVEN A YELLOW CARD THEY WILL RECEIVE A 0 POINT SCORE IN THEIR CURRENT GAME. A PLAYER GIVEN 2 YELLOW CARDS WILL BE REMOVED FROM THE EVENT.

PAINT SCORE

THE MINIMUM PAINTING REQUIREMENT FOR OUR EVENTS IS 3 COLOURS AND BASED. ANY MODELS THAT DO NOT MEET THIS REQUIRMENT WILL BE REMOVED FROM PLAY.

WYSIWYG

ALTHOUGH IT IS AWESOME TO SEE PEOPLE CONVERTING THEIR OWN MODELS, A CERTAIN AMOUNT OF 'WHAT YOU SEE IS WHAT YOU GET' SHOULD BE PRESENT. COUNTS AS MODELS SHOULD STILL BE THE SAME SIZE, FOOTPRINT AND HAVE THE SAME WEAPON LOAD OUT AS THEIR GW EQUIVALENT.

IF YOU WOULD LIKE TO CHECK WHETHER ONE OF YOUR CONVERTED MODELS WOULD BE ACCEPTED YOU MAY SEND AN EXPLANATION AND PICTURES TO: EVENTS@GLASSHAMMERGAMING.CO.UK

LIST SUBMISSION

LISTS MUST BE SUBMITTED BY MIDNIGHT THE SUNDAY BEFORE THE EVENT (22ND JUNE 2025). ANY LISTS NOT SUBMITTED ON TIME OR INCORRECT WILL INCUR PENALTY POINTS FOR THE PLAYER.

CHESSE CLOCKS

IF ANY PLAYER WANTS TO USE A CLOCK THEN IT **MUST** BE USED. IF YOU DO NOT USE A CHESSE CLOCK THEN COMPLAINTS ABOUT SLOW PLAY CANNOT BE DEALT WITH. JUDGES RESERVE THE RIGHT TO ENFORCE THE USE OF A CHESSE CLOCK ON ANY PLAYER. **ALL UNDEFEATED PLAYERS MUST USE A CLOCK FROM ROUND 4 ONWARDS.**

MARINE CHAPTERS, GUARD REGIMENTS, CRAFTWORLDS, ETC.

IT DOESN'T MATTER WHAT COLOUR YOU PAINT YOUR ARMY AS LONG AS YOUR ARMY LIST CLEARLY STATES WHICH CHAPTER TRAIT, REGIMENT, ETC YOUR USING.

MISSING A BATTLE

IF YOUR OPPONENT HAS NOT ARRIVED 15 MINUTES INTO THE ROUND, REPORT TO THE REF HQ AND WE WILL RE-PAIR YOU.

CATERING

LUNCH WILL **NOT** BE PROVIDED HOWEVER FOOD VENDORS WILL BE PRESENT OUTSIDE. SNACKS, DRINKS & ALCOHOL WILL BE AVAILABLE IN THE HALL.

(PLEASE NOTE GUESTS CANNOT BRING THEIR OWN ALCOHOLIC DRINKS)

PICTURES & STREAMING

PICTURES/VIDEOS WILL BE TAKEN AT THE EVENT AND PUBLISHED ON ALL OUR SOCIAL MEDIA PLATFORMS. BY PURCHASING A TICKET YOU ARE CONFIRMING THAT YOU CONSENT TO THIS AND ALL OTHER RULES IN THIS PACK.

EVERYONE IS WELCOME AT OUR TOURNAMENTS. WHETHER YOU ARE A 40K NEWBIE OR A SEASONED VETERAN, WE'RE HERE TO ENSURE EVERYONE HAS A FUN WEEKEND.

WE LOOK FORWARD TO SEEING YOU

LOVE

DAN & MANI

